

# SAKMA SPECIALIST IN LED TECHNOLOGY

## AURA



Foco orientable para carril electrificado  
Adjustable spotlight for electrified track

- Para carril electrificado
- Foco orientable en 2 ejes
- Distintos ángulos de luz mediante reflectores
- Fuente de alimentación incorporada
- Track-mounted
- Adjustable in 2 axis
- Several beams by reflectors
- Built-in power supply



DALI



**DESCRIPCIÓN | DESCRIPTION**

Aura es un proyector para carril electrificado.  
Orientable en dos ejes y con diversos ángulos de luz mediante reflectores.  
Ideal para iluminar comercios, hoteles o hoteles.

Aura is a projector for electrified track.  
Adjustable on two axes and with different angles of light through reflectors.  
Ideal to illuminate shops, hotels and museums.

**CARACTERÍSTICAS TÉCNICAS | TECHNICAL CHARACTERISTICS**

Referencia Reference	Voltaje Voltage V DC	Potencia Power W	f.d.p PF	Temp. color Color temp. K	CRI	Flujo Flux lm	Eficiencia Efficiency lm/W	Ángulo Beam °	Cantidad Number LED
LFG-	230	30	>0.97	3000	>90	2157	90	18 28 36	1
				4000		2693			

Referencia Reference	Protección Protection	Disipación Disipation	Orientación Orientation °	Vida útil Useful life h (25°C)	Temp. trabajo Work temp. °C	Temp. stock Stock temp. °C	Dimensiones Dimensions mm	Peso Weight Kg
LFG-	IP20	Pasiva Passive	2 ejes   axis: 350°/90°	>50000	-15 - +40	-20 - +60	Ø37	0,824

Referencia Reference	Radiador Radiator	Acabado Finish
LFG-	Aluminio anodizado Anodized aluminum	Blanco White

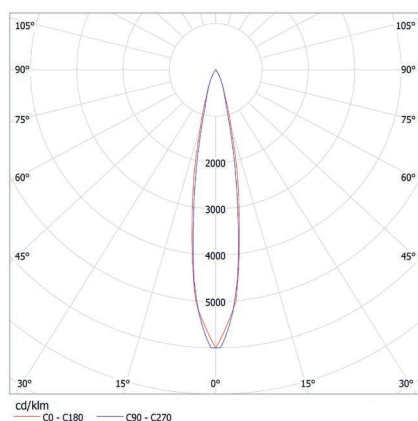
Por encargo se pueden realizar en diferentes temperaturas de color y CRI | By request it can be manufactured in different color temperatures and CRI

**EMBALAJE | PACKAGING**

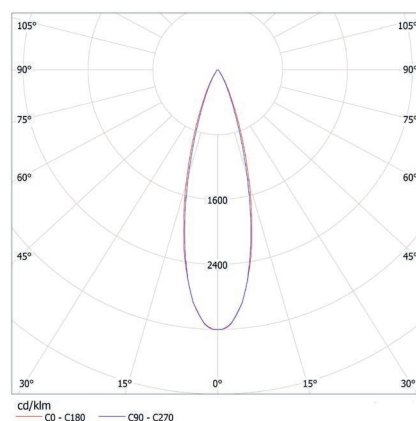
Referencia Reference	Unidades por caja Units per box	Dimensiones Dimensions mm	Peso Weight kg
LFG-	1	203x271x103	1,038

**FOTOMETRÍA | PHOTOMETRY**

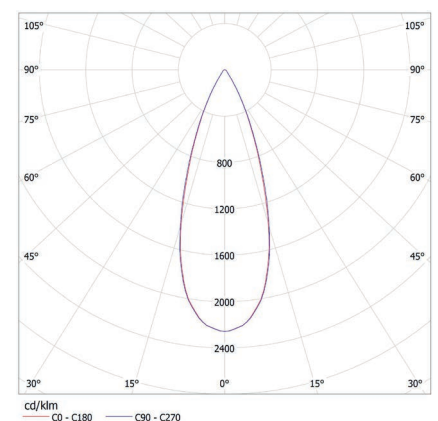
18°



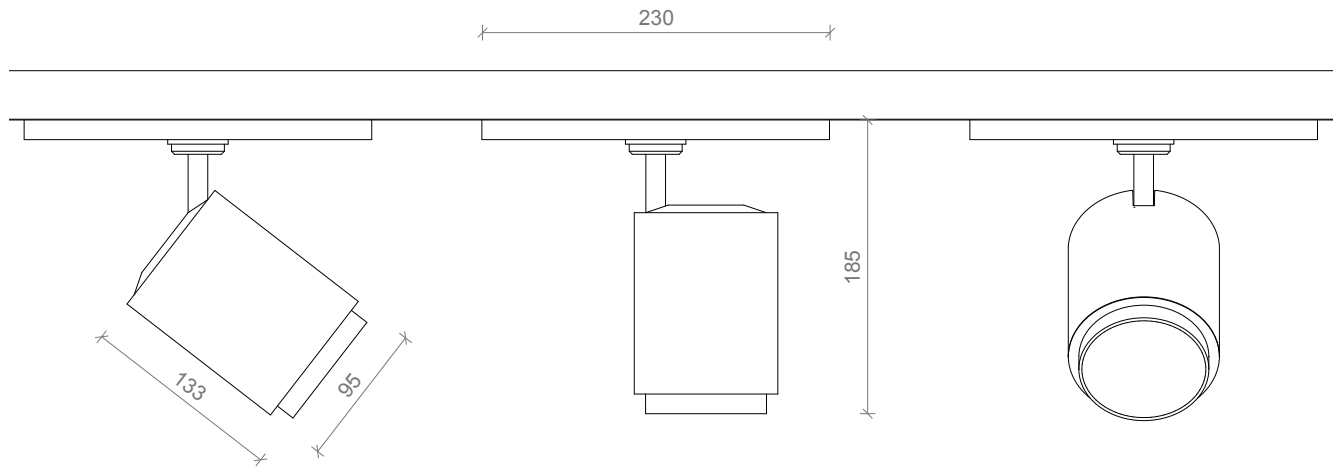
28°



36°

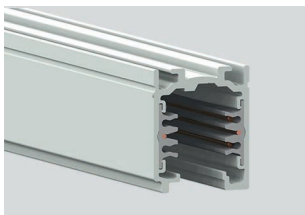


**DIMENSIONES | DIMENSIONS mm**



**ACCESORIOS | ACCESSORIES**

Carril electrificado | Electrified track



C1



T1



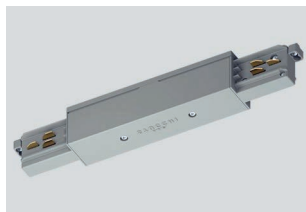
S2



S1



A2



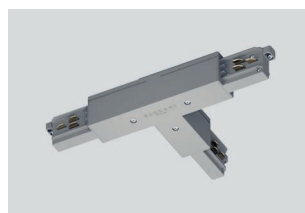
A1



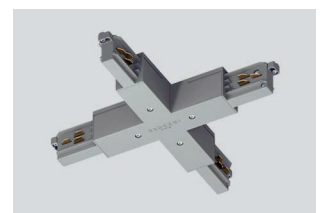
U1



U2



U3



U4

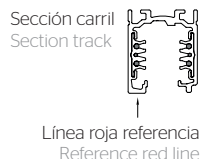


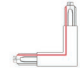
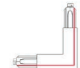

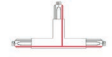



Sin carril electrificado | Without electrified track



B1

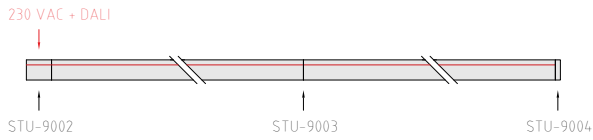


B2

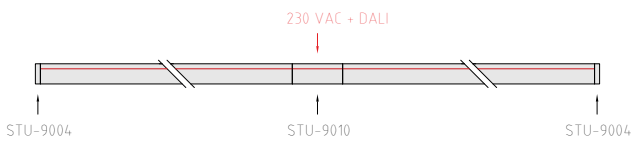
Artículo Item	Imagen Image	Referencia Reference	Descripción Description	Esquema (vista superior) Diagram (top view)
Carril Track	C1	STU-9000-2/W-ST	Carril electrificado 2000 mm, blanco Conductors track 2000 mm, white	 <p>Sección carril Section track</p> <p>Línea roja referencia Reference red line</p>
		STU-9000-4/W-ST	Carril electrificado 4000 mm, blanco Conductors track 4000 mm, white	
		STU-9000-2/B-ST	Carril electrificado 2000 mm, negro Conductors track 2000 mm, black	
		STU-9000-4/B-ST	Carril electrificado 4000 mm, negro Conductors track 2000 mm, black	
Tapa End cap	T1	STU-9004/W	Tapa final para carril, blanco End cap for conductors track, white	
		STU-9004/B	Tapa final para carril, negro End cap for conductors track, black	
Fijación techo Ceiling clamp	S1	STU-9000/111	Fijación techo superficie Fixing surface ceiling	
	S2	STU-9000-KIT-8	Fijación techo suspendido Fixed suspended ceiling	
Alimentador extremo End-feed	A1	STU-9001/W	Alimentador extremo polaridad derecha, blanco End-feed right, white	
		STU-9001/B	Alimentador extremo polaridad derecha, negro End-feed right, black	
		STU-9002/W	Alimentador extremo polaridad izquierda, blanco End-feed left, white	
		STU-9002/B	Alimentador extremo polaridad izquierda, negro End-feed left, black	
Alimentador medio Middle feet	A2	STU-9010/W	Unión electrificada para carriles, blanco Jointing connector, white	
		STU-9010/B	Unión electrificada para carriles, negro Jointing connector, black	
Connector de unión Jointing connector	U1	STU-9003/W	Toma de alimentación intermedia, blanco Middle feed, white	
		STU-9003/B	Toma de alimentación intermedia, negro Middle feed, black	
Unión L L-feet	U2	STU-9011/W	Unión L, Polaridad interna, blanco L-feet, Internal polarity, white	
		STU-9011/B	Unión L, Polaridad interna, negro L-feet, Internal polarity, black	
		STU-9012/W	Unión L, Polaridad externa, blanco L-feet, External polarity, white	
		STU-9012/B	Unión L, Polaridad externa, negro L-feet, External polarity, black	
Unión T T-feet	U3	STU-9013/W	Unión T, Polaridad externa-izquierda, blanco T-feet, Exernal-left polarity, white	
		STU-9013/B	Unión T, Polaridad externa-izquierda, negro T-feet, Exernal-left polarity, black	
		STU-9014/W	Unión T, Polaridad externa-derecha, blanco T-feet, Exernal-right polarity, white	
		STU-9014/B	Unión T, Polaridad externa-derecha, negro T-feet, Exernal-right polarity, black	
		STU-9015/W	Unión T, Polaridad interna-izquierda, blanco T-feet, Exernal-left polarity, white	
		STU-9015/B	Unión T, Polaridad interna-izquierda, negro T-feet, Exernal-left polarity, black	
		STU-9016/W	Unión T, Polaridad interna-derecha, blanco T-feet, Exernal-right polarity, white	
		STU-9016/B	Unión T, Polaridad interna-derecha, negro T-feet, Exernal-right polarity, black	
Unión X X-feet	U4	STU-9017/W	Unión X, blanco X-feet, white	
		STU-9017/B	Unión X, blanco X-feet, white	
Base Base	B1	STU-9000/BP-D-W	Base fijación techo (sin carril), blanco Ceiling fixing base (without track), white	
Adaptador base Base adaptor	B2	STU-9009/W	Adaptador (sin carril), blanco Adaptor (without track), white	
		STU-9009/B	Adaptador (sin carril), negro Adaptor (without track), black	

**ESQUEMA MONTAJE | ASSEMBLY DIAGRAM**

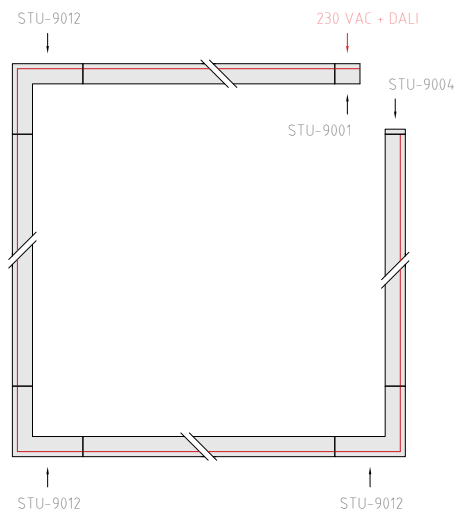
Ejemplo | Example 1



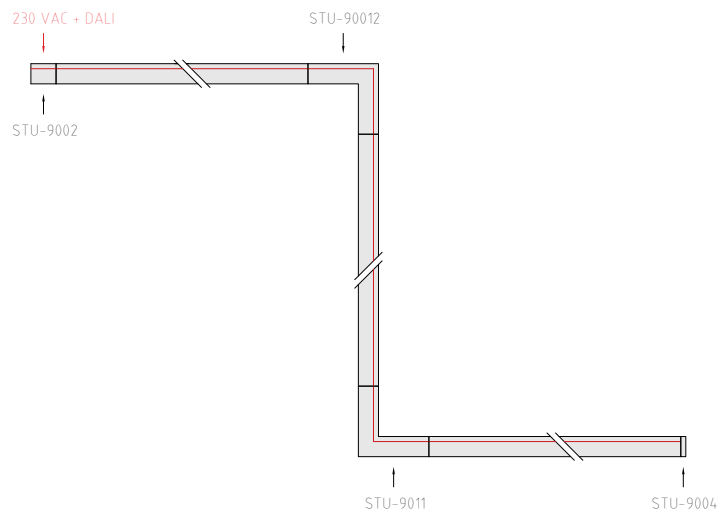
Ejemplo | Example 2



Ejemplo | Example 3



Ejemplo | Example 4



Vista superior  
Top view

**GUÍA DE REFERENCIAS | REFERENCES GUIDE**

LFG-30S-NNN-JBE-AEJ	AURA, 3000 K CRI>90, 18º, Blanco, 30 W, 230 VAC, Carril electrificado de superficie 3 fases + datos AURA, 3000 K CRI>90, 18º, White, 30 W, 230 VAC, Surface track three phase + data
LFG-30S-NNN-JCE-AEJ	AURA, 3000 K CRI>90, 28º, Blanco, 30 W, 230 VAC, Carril electrificado de superficie 3 fases + datos AURA, 3000 K CRI>90, 28º, White, 30 W, 230 VAC, Surface track three phase + data
LFG-30S-NNN-JDE-AEJ	AURA, 3000 K CRI>90, 36º, Blanco, 30 W, 230 VAC, Carril electrificado de superficie 3 fases + datos AURA, 3000 K CRI>90, 36º, White, 30 W, 230 VAC, Surface track three phase + data
LFG-40S-NNN-JBE-AEJ	AURA, 4000 K CRI>90, 18º, Blanco, 30 W, 230 VAC, Carril electrificado de superficie 3 fases + datos AURA, 4000 K CRI>90, 18º, White, 30 W, 230 VAC, Surface track three phase + data
LFG-40S-NNN-JCE-AEJ	AURA, 4000 K CRI>90, 28º, Blanco, 30 W, 230 VAC, Carril electrificado de superficie 3 fases + datos AURA, 4000 K CRI>90, 28º, White, 30 W, 230 VAC, Surface track three phase + data
LFG-40S-NNN-JDE-AEJ	AURA, 4000 K CRI>90, 36º, Blanco, 30 W, 230 VAC, Carril electrificado de superficie 3 fases + datos AURA, 4000 K CRI>90, 36º, White, 30 W, 230 VAC, Surface track three phase + data